



**Another Shade of Green**  
The vision realized.

*Explore the gardens  
on your own*

with the help of this brochure, or call 419-354-6223 for a group tour, to learn about classes and public programs, or to volunteer your time and talent to the garden. We are delighted you have visited and hope you will come back throughout the year to see what Simpson Garden Park has to offer at all seasons.

GARDEN HOURS: SUNRISE TO SUNSET

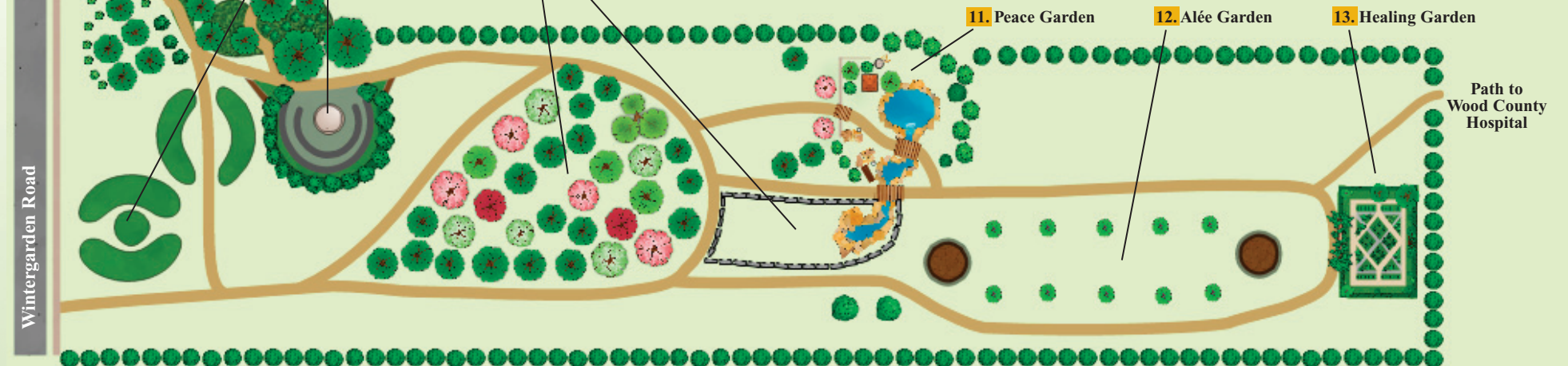


**SIMPSON GARDEN PARK** is 11 acres of rolling gardens in the middle of an urban landscape. It is a great place to get away from the pressures of city life and relax, a resource to discover plants that would work well in your own yard, a learning center for young and old alike, and a great place to volunteer your time. The focus of the garden park is a display of plants that grow well in our climate and various soil conditions and education on the role plants play in the web of life. Plants form the basis of every food chain... with humans at the top. Green plants provide not only food, but clothing, shelter and shade, they help store carbon dioxide and cool the earth, they also make oxygen which is vital to life. Plants and people go hand in root at Simpson Garden Park.

The Garden grows through donations from people like you. If you are interested in learning more

about memorial or honorarium opportunities, please contact us! We accept donations of all sizes and use them for annual plantings, installing new features in the garden or even adding a whole new garden thanks to major donors.

This new public garden dates back to 2002 when the community of Bowling Green envisioned a new type of park. To bring that master plan to fruition took several years of planning and fundraising; the Bowling Green Parks and Recreation Foundation created a Simpson Garden Park Campaign committee and worked diligently to raise over \$750,000 from 2005-2009 for the new garden. Paired with over \$1 million in public funding from the Bowling Green Parks and Recreation Department, the Simpson Garden Park and Simpson Building became a reality!



# Garden Tour



**1. CORNER GARDEN** – Designed for drivers and walkers, this garden is a mix of interesting shrubs, grasses, perennials and dazzling annuals. The color theme changes over time and provides interest throughout the year. It is a great anchor garden for a busy city corner and has been a vital part of the garden since 2005.

**2. EAST ENTRY GARDEN** – The Simpson Building used to served as a church and the original landscape fit this mold well. Local gardeners designed a new and exciting entrance to the building in 2006, full of interesting trees and shrubs to create the backbone of the garden. Perennials, annuals and bulbs add dashes of color and texture during the growing season. This garden is anything but institutional now... including the seasonally changing entry urns that delight visitors with their creativity and charm. You can get great ideas for your home entry in this garden.

**3. WILLOW WALK** – Cool shades of bronze, green and white dominate this north garden. The Willow Walk was designed and planted in 2008 to guide visitors into the Children's Discovery Garden at one end and get them safely back to the parking lot at the other end. Beautiful throughout the year, a mix of trees, shrubs and perennials provides color, texture and interest from spring into winter. Sit in the cool shade and rest in the Willow Walk as you wind your way around Simpson Garden Park.

**4. CHILDREN'S DISCOVERY GARDEN** – Opened in 2008, this is one of the few hands-on teaching gardens in Simpson Garden Park. We encourage visitors, old and young, to explore, touch, pick, water and plant in this wonderful garden. The goal is

to unite people to the land through a series of educational gardens: the Underground Room teaches about bedrock, soil, roots and decomposers. The waterfall, stream and pond focus on the importance of water and the water cycle. A Silly Garden and Potting Shed lets children use their imagination and allows plants to become tools of learning that they can take home and observe. The Storybook Garden, Mr. McGregor's Garden and Herb Garden celebrate plants as food and the role they play in human culture. The Butterfly and Hummingbird Garden shows the critical partnership between plants and birds and plants and insects. Without pollination, there would be no seeds and no food! Come visit the Children's Discovery Garden in all seasons and explore this world of wonder.

**5. SENSORY GARDEN** – Accessible to people of all abilities, this walled garden features raised planting beds, a running waterfall, beautiful color walls and lovely seating areas. Dedicated in 2009, the garden focuses on stimulating the senses of sight, hearing, smell and touch. Each raised bed is devoted to a different sense and visitors are sure to find delight in exploring this garden.

**6. WEST ENTRY GARDEN** – Winner of a community design contest, Bostdorff Greenhouse Acres designed and installed this garden in 2008 at the entry off Wintergarden Road. Whether you walk by or ride by the beautiful plantings, you will find something to enjoy. Colorful perennials are splashed among flowering trees and shrubs. The garden also connects the Sensory Garden walkway to the main entry arch, making it a perfect way to enter the rest of Simpson Garden Park by foot.

**7. SHADE GARDEN** – At 1.3 acres, the Shade Garden is one of the largest ornamental gardens in the park. While it will take a decade or more to convert the open, grassy field into a shaded garden, visitors can enjoy the Daylily

Walk—which features sun-loving plants that will gradually be replaced as the new trees grow up and provide shade. Look for new trees and shrubs to be planted from 2009 – 2011 in this garden. It is truly planting for the future, as this garden will change over a decade or two. Watch the slow conversion from sunlight to shade and enjoy the private seating areas scattered along the walkways.

**8. SCULPTURE GARDEN** – A rolling area of grasses and flowers contrasts with the manicured ornamental areas in Simpson Garden Park. Featuring mounded hills and the in-ground Rotary Amphitheater, the Sculpture Garden also hosts regular art shows. The rotating artwork and patchwork of flowering plants will add zest to a sunny summer stroll through the site. Easy to maintain native plants also demonstrate an eco-friendly way to landscape large areas and conserve water, fertilizer and maintenance. Smaller, manicured versions of these prairie beds look great in larger home landscapes.

**9. TERRIFIC TREES** – Over 30 species of trees can be found in one spot, and all are suited to the home landscapes of Bowling Green. This is a great way to study trees that might fit into your backyard. We welcome questions about height, disease resistance and suitability to your site. Just check in with one of our friendly park staff for more information.

**10. UPLAND GARDEN** – Much of Bowling Green sits on top of bedrock, making gardening and landscaping a challenge at best. Planned for future installation, the Upland Garden will feature trees, shrubs and smaller plants that do well in rocky, limestone soils or sand. For those of you with just a few inches of soil to cultivate in, this garden will be a great place to get ideas for your home landscape.

**11. PEACE GARDEN** – A waterfall, stream and pond leads down into a peaceful site, surrounded by rolling hills and trees. The

simplicity of oriental gardens is reflected in the design and intent of the Peace Garden. To be installed in several phases as funding allows, the first phase in 2010 includes the water features and pathways into this quiet spot in the heart of Bowling Green.

**12. ALÉE** – A geometric line of trees, in this case London Plane trees, anchors the east end of Simpson Garden Park. An expansive lawn rolls beneath the young trees with raised planting beds at either end to serve as a backdrop for a quiet stroll or garden wedding. Popular in Europe, an alée provides a restful, shady pathway for visitors to enjoy.

**13. HEALING GARDEN** – A short walk from nearby Wood County Hospital, the Healing Garden is a place to learn where our medicines originated from. Healing herbs and toxic plants make this a place to look, but not touch or taste. Designed as a walled garden, the Healing Garden is a nice spot to spend time in learning about medicinal plants or just quietly enjoying the beauty of a landscape enclosed in the green hug of hedges. These hardy plants are also low maintenance when it comes to water and fertilizer, so they may be suitable for some problem spots in your landscape if children and pets are kept from consuming them. Plants serve many roles in human society and the role of healing agent is the focus of this garden.

*No pets permitted in the formal gardens due to the damage they do to the plants.*

*Public Restrooms and Drinking Fountains are available in the Simpson Building and the Maintenance Building.*

*Portions of the Garden and the Simpson Building can be rented for special occasions.*

**For Garden Tours and Information:  
419-354-6223 or email [bgparks@bgo.org](mailto:bgparks@bgo.org).**